

THE LINKED LEARNING ADVANTAGE

Linked Learning is a proven systemic approach to transforming education based on this simple idea: students work harder and dream bigger if their learning connects with them, and connects them to the world. Young people are introduced to career possibilities in sectors that drive their region’s economy, making education relevant—and inspiring them to graduate from high school with the coursework and skills they need to thrive in college, career, and life.

An integrated approach

Linked Learning students learn through career-themed pathways tied to local industry sectors. Each pathway integrates four essential components: rigorous academics that prepare students to succeed in college; career technical education courses in sequence, emphasizing real-world applications of academic learning; work-based learning that provides exposure to real workplaces and teaches the professional skills needed to thrive in a career; and comprehensive support services to address the individual needs of all students, ensuring equity of access, opportunity, and success.

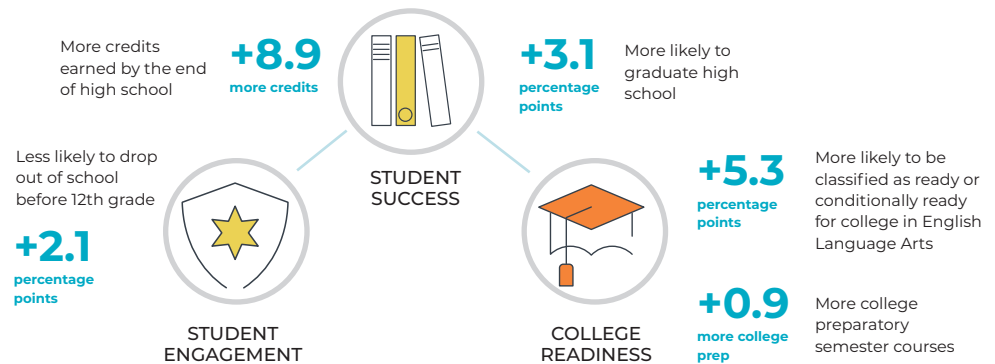


Data that follows is from a multiyear independent evaluation of Linked Learning in nine California school districts serving a high percentage of low-income students. All differences reported are statistically significant at $p < .05$ (i.e., large enough that they are unlikely to have arisen by chance).

ACADEMIC SUCCESS

Linked Learning students are more likely than similar peers in traditional high schools to graduate and be ready for college.

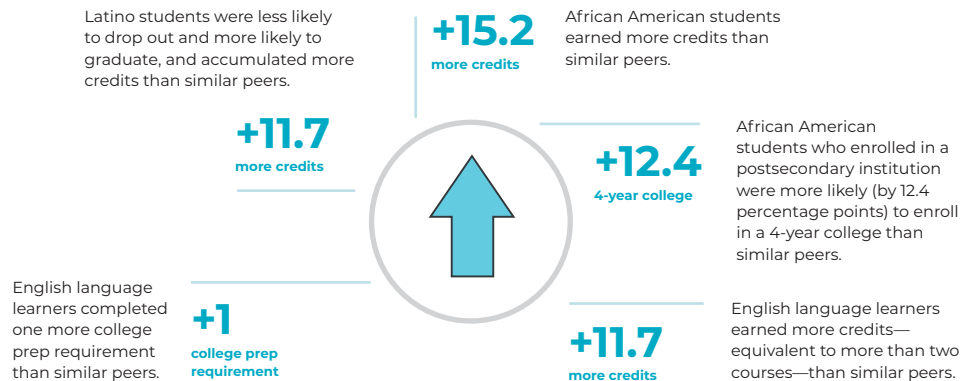
SEE SOURCE 1



CLOSING THE ACHIEVEMENT GAP

Linked Learning advances equitable outcomes for student groups often underserved in traditional education.

SEE SOURCE 1



SOURCE 1: SRI INTERNATIONAL. (2016). TAKING STOCK OF THE CALIFORNIA LINKED LEARNING DISTRICT INITIATIVE. SEVENTH-YEAR EVALUATION REPORT (REVISED AUGUST 2018).
 SOURCE 2: SRI INTERNATIONAL. (2014). TAKING STOCK OF THE CALIFORNIA LINKED LEARNING DISTRICT INITIATIVE. FIFTH-YEAR EVALUATION REPORT.

COLLEGE AND CAREER READINESS

DEVELOPING PROFESSIONALISM SEE SOURCE 2

+20

percentage points

Gained knowledge of expectations for professional behaviors



+22

percentage points

Gained ability to create résumé or job application

Linked Learning students are more likely than comparison students to report that their pathway experiences helped them develop skills needed for success after high school, including 21st century skills, productive dispositions and behaviors, and professionalism.

INFLUENCES ON POSTSECONDARY STUDIES SEE SOURCE 1

+11

percentage points

Took high school courses that sparked interest



+14

percentage points

Spent time working off site in an industry

+11

percentage points

Were encouraged by counselor or other adult in high school

Linked Learning students going to college are more likely than comparison students to rate high school influences as important to their choice of postsecondary goals and plans.

EMPLOYEE BENEFITS SEE SOURCE 1

+11

percentage points

Health insurance



+7

percentage points

Paid vacation

+14

percentage points

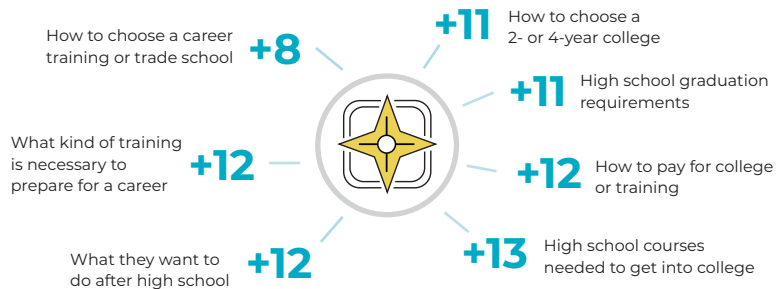
Sick days

Linked Learning students employed during the year after high school graduation are more likely than comparison students to have a job with good benefits.

Linked Learning students are more likely than comparison students to report receiving guidance from adults regarding postsecondary planning.

(percentage point difference, Linked Learning and comparison students)

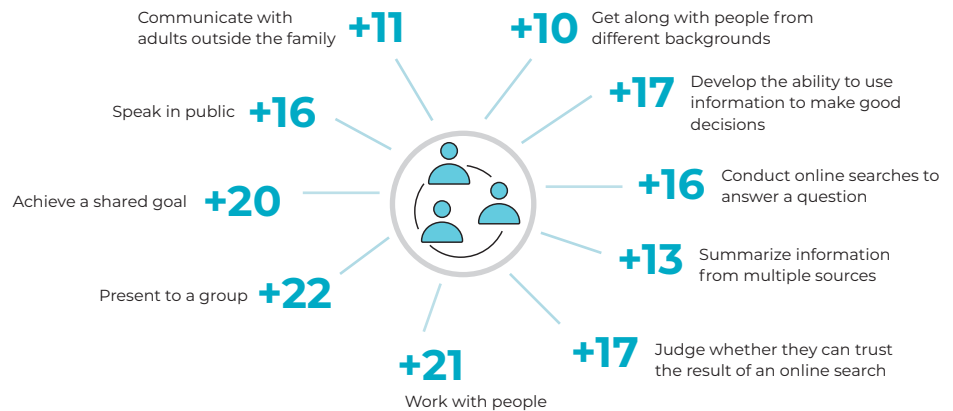
SEE SOURCE 2



Linked Learning students are more likely than peers to report improved 21st century skills.

(percentage point difference, Linked Learning and comparison students)

SEE SOURCE 2



SOURCE 1: SRI INTERNATIONAL. (2016). TAKING STOCK OF THE CALIFORNIA LINKED LEARNING DISTRICT INITIATIVE. SEVENTH-YEAR EVALUATION REPORT (REVISED AUGUST 2018).
SOURCE 2: SRI INTERNATIONAL. (2014). TAKING STOCK OF THE CALIFORNIA LINKED LEARNING DISTRICT INITIATIVE. FIFTH-YEAR EVALUATION REPORT.