



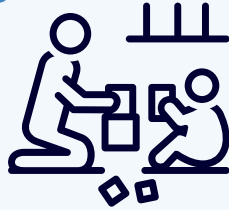
# North Kansas City Schools Early Education Center

Play. Grow. Learn.

## Tuition-Paid Preschool Registration

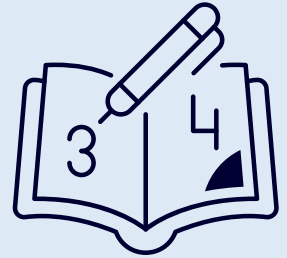
### Blended-age classrooms grounded in the Project Construct Framework

Classrooms will have up to 20 preschoolers with a certificated teacher and paraprofessional in each room.



### Qualifications

Preschoolers must be 3 or 4 on or before July 31, 2021 and not kindergarten eligible to participate in spring registration.



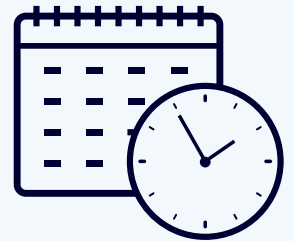
### Transportation

Transportation is not provided to preschoolers in the tuition-paid classrooms.



### Hours and Calendar

The tuition-paid classrooms will be open from 6:45 am to 6:00 pm and follow NKC Schools' Academic Calendar.



### Registration begins March 23

Registration begins March 23, 2021 at 7:00 a.m. through the Parent Portal.



Families will be enrolled on a first-come, first-served basis.

Information about summer programming will be publicized in 2022.

### Tuition Rates

Tuition for the 40 community openings is \$250.00 per week.  
Tuition for the 40 employee openings is \$200.00 per week.



### Important Dates

March 23-Spring registration opens for NKC Schools' Community and NKC Schools' employees who are also residents.

April 20-Employee paid registration opens to employees who do not live in NKC Schools' boundaries. If employee spots are full, families will be placed on the waiting list.

June 7-Employee paid spots open to community members at the community rates, beginning with families on the waitlist.

